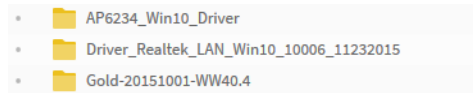


Beelink BT3 Driver Installation tutorials

Step1. Downloading the driver

<https://mega.nz/#F!0gsWADrC> keys: !a5QuYz7lpztLXb3rf1VLug

Step2. Open the downloaded the folder "BT3 drivers"

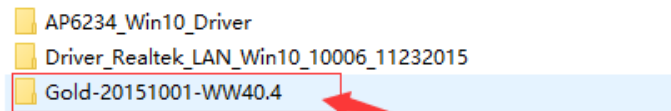


Step3. The drivers are copied in "windows C:."

Drivers for installation order

*Step1. Driver Installation

Click on the folder "Gold-20151001-WW40.4", Double-click the "T08.bat" installation is complete.



Step1.1

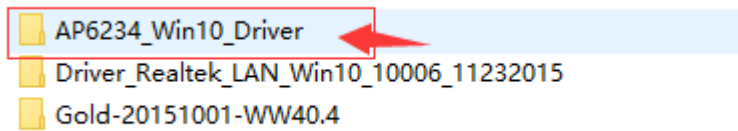


Step1.2 Open to install the driver

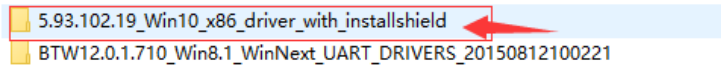
*Step2. Driver Installation

Click on the folder

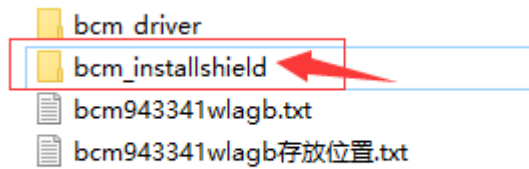
"AP6234_Win10_Driver/5.93.102.19_Win10_x86_driver_with_installshield/bcm_installshie
Id/ setup , Run the "setup" .



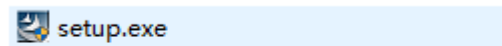
step2.1



step2.2



step2.3



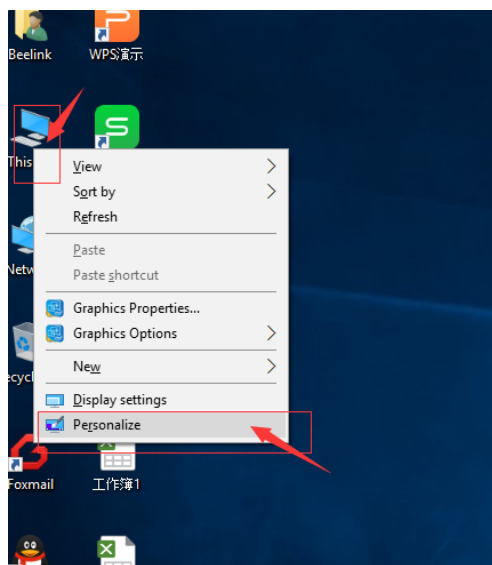
step2.4 Open to install the driver



step2.5 Copy files "**bcm943341wlagb.txt**",

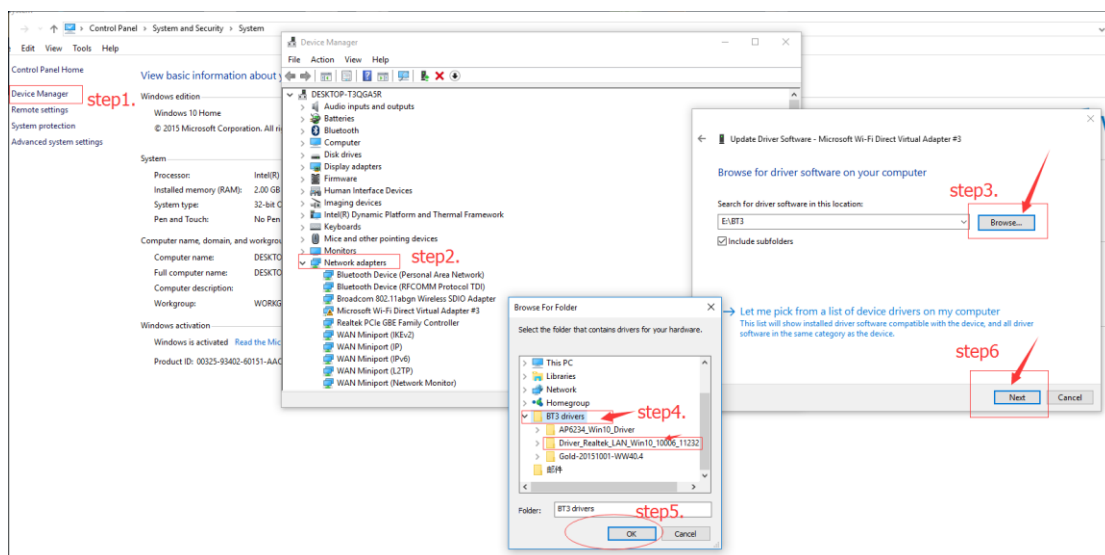
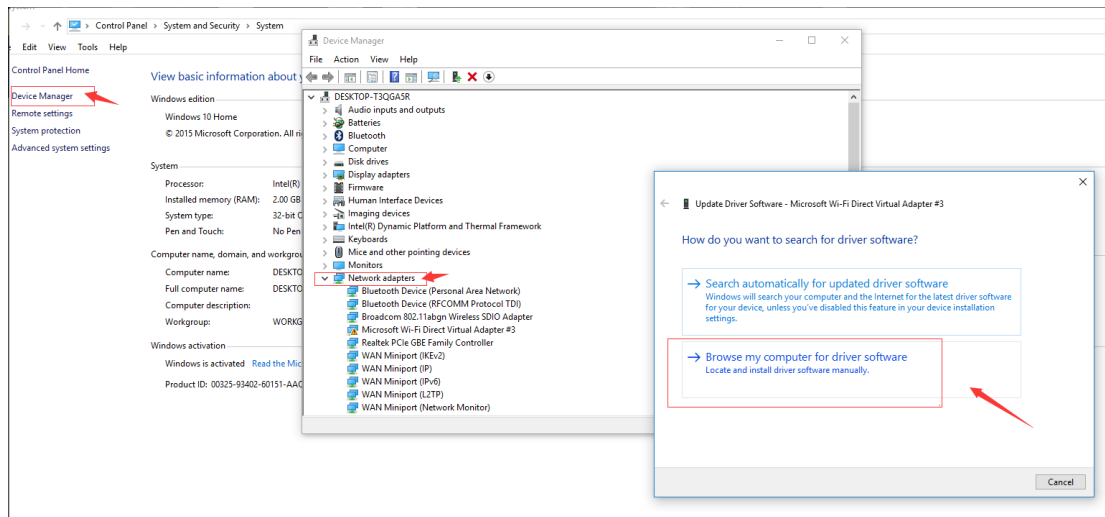
Paste in: folder "C \ Windows \ System32 \ drivers"

*Step3. Manual update Driver Installation



Step3.1 Click on the desktop "This PC" , The

right mouse button "Personalize"



step3.2

1. Click the "Device Manager"
2. You need to manually select the updated drivers , Such as: "Network adapters" ,
The right mouse button select "Update"
3. Select the downloaded drivers the folder "BT3 drivers/
Driver_Realtek_LAN_Win10_10006_11232015" , Click the "OK", and finally click
"Next" .

step3.3

4. Click the "Device Manager"
5. You need to manually select the updated drivers , Such as: " Unknown device" ,

The right mouse button select "Update"
6. Select the downloaded drivers the folder "BT3 drivers/ Gold-20151001-WW40.4" ,

Click the "OK", and finally click "Next" .